



American Made
Ergonomically Designed

World's Leading Electro - Static Discharge Mat

This product was designed for protection against Electro-Static Discharge . The rubber mat is conductive for a rapid discharge to ground. These anti-fatigue mats are scientifically and ergonomically designed to reduce strains, pains, and worker's compensation claims related to prolonged standing.

ESD

3/8" Male or female grounding snap available if needed.
Must order snaps when ordering mats.



<u>ESD Stock Sizes</u>	<u>Size</u>	<u>Weight</u>	<u>List Prices</u>
PTMA20358ESD	20"x36"x5/8"	3.5 lbs	\$ 79.00 each
PTMA30358ESD	30"x36"x5/8"	6.5 lbs	\$ 118.00 each
PTMA36558ESD	36"x60"x5/8"	13.0 lbs	\$ 236.00 each

The above sizes can be cut to a custom width and length. Runners available in a 3' width. Factory Bonded every 5' or when necessary.

Features:

- Closed cell non absorbent
- Resistance point to point,.....5 x 10⁵ OHMS
- Charge decay time, 5000 Volts to 100 Volts,.....
- FTMS 101C, Method 4046.....<0.01 Seconds
- Durometer 45, ASTM D-2240.....50 Seconds
- Burn Test, UL94HBF.....Passed
- Self extinguished in 10 sec., burned 1/4".....

Benefits:

- Promotes employee wellness
- Immediate increase in productivity and employee morale due to work place comfort
- Guaranteed increased reduction of exposure to prolonged cold, heat, vibration
- Reduces spinal compression, increases circulation
- Ergonomically designed, guaranteed reduction of back, leg, foot, and ankle fatigue
- Non allergenic, latex and silicone free
- Ortho ESD Mats are complete with safety bevel
- Factory customized shapes and sizes are available if needed. Ask your supply representative for a free quote



American Made
Ergonomically Designed

Electro-Static Discharge Mat


You will not be shocked by our mats ⚡

Ortho ESD mats are of the highest quality in the industry. These mats will deliver increased efficiency and reduce injury. This orthopedic wonder is a high performance mat for high performance stand up workers.

Additional usage areas:

- Automotive manufacturing
- Assembly lines
- Factory & fabrication
- Chemical plants
- Ammunition manufacturers
- Computer equipment repair
- Clean room applications
- Graphic arts
- Electronic production & repair
- Electrical equipment
- Computer manufacturers
- Cellular phone manufacturers
- Semiconductor manufacturing

Non slip properties:

- Excellent
- Wet or dry applications
- Oily and slippery surfaces
- NFSI tested and approved 

Colors:

- Comes in Black only

Edge:

- Beveled on all sides for ease of cart traffic and added safety

Warranty:

- The ESD mat is guaranteed against defects in materials and workmanship for two years including premature wear
- Life expectancy 3-8 years

Patterns:

- Original aggressive top and bottom for oily areas

Chemical resistance:

- Excellent
- The Ortho Mat will not be affected by petroleum products or chemicals
- We will proudly provide samples for testing. Ortho Mat welcomes the opportunity to be compared

Cleaning:

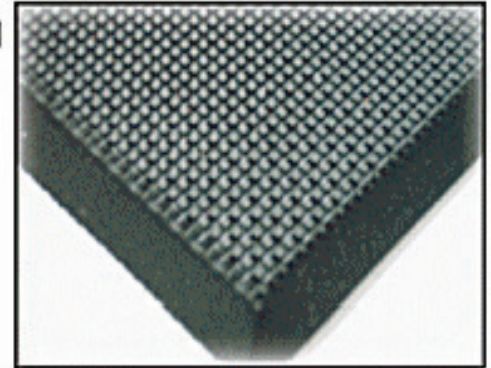
- Very light weight, easy to lift and clean. Can be cleaned with ammonia, bleach, chlorine, or acid based cleaners Okay to steam
- Maximum temperature of 250 degrees
- For disinfectant cleaning follow your normal protocol

Raw material:

- Fabricated from superior closed cell virgin nitrile rubber

Thickness and sizes:

- Approximately 5/8"
- All mats are approximate in size + or - to 1". Sponge products are not zero tolerance materials due to expansion and contraction



Please Note:

Ortho Mat has been specifically designed to reduce the risk of slips and falls, while increasing safety and comfort in the work place. Pro-Tech Mats Industries, Inc, accepts no responsibility for damages involving the use of our products. No product can guarantee that accidents will not happen. Suitability to task and operations in all aspects must be determined by the user of the mat.

Also available: Ask your supply rep for information on Ortho 1 mats, Ortho 2 Extruded mats by the foot, and other Ortho Mat products.

ESD ORTHO MAT

Proudly distributed By:

Raymond Board
R & R Associates
9640-B Mission Gorge Rd, #166
Santee, CA 92071
619-448-6386